

Public transport in and around Dunbar and district



Connecting Dunbar



Street plans, paths and public transport information for Dunbar and district



Dunbar and East Linton maps

Sustaining Dunbar



Sustaining Dunbar is a local charity which is, amongst other things, working to make easier for people to choose not to drive and support people who are not able to. This is not just to help us be 'greener' - we all benefit from reducing the danger of busy roads.

This map highlights paths instead of roads, and features bus-stops and bus routes. It tells you where to find public transport information, and has the phone numbers of local taxis. The quality of the paths are shown, so that you can choose the best way of getting about without having to worry about getting muddy or having to go up steps. We have also marked swing parks, post boxes and the best places to cross the road.

Over time we will be working with East Lothian Council to improve the path network and pavements. We'd love to hear your comments on the maps and any corrections or suggestions to make them more useful.

Please contact us at

Sustaining Dunbar,
16 West Port, Dunbar EH42 1BU
Email:
transport@sustainingdunbar.org



Outer side: Ward seven path map. Public transport map & information

Inner side: Dunbar and East Linton pedestrian maps.



Look out for our very popular bus and train timetable showing links to Edinburgh. You will find it at the station and in lots of the shops around town.

Travel information

Timetables
Up-to-date timetables for trains and buses are available in local libraries and from Sustaining Dunbar, 16 West Port, Dunbar.

Traveline Scotland
0871 200 22 33 www.travelinescotland.com
Bus and train timetable information; calls cost 10p per minute from a BT landline.

One Ticket
www.one-ticket.co.uk The One-Ticket is a single ticket for buses and train travel. You can buy a day ticket for buses only, or a weekly/monthly/annual season ticket to allow you to take any local bus or train at any time. Tickets are available from all staffed train stations.

PlusBus
Did you know that when you buy your train ticket to Edinburgh you can add on city-wide bus travel for £3? This is the same price as LRT's DAYticket and First's FirstDay ticket, but allows you to choose to travel with either company, or any of the smaller Edinburgh bus operators. And if you are a railcard holder you can buy it for only £2, which is cheaper than either of the day saver tickets. Bargain! PlusBus is available for other cities too, but you have to specify which one when you buy it.

TripshareEastLothian
A free journey matching service to put you in touch with people who are going the same way as you.
www.eastlothiantripshare.com

Getting to the Royal Infirmary of Edinburgh
Unfortunately it is not easy to get to Little France from this area by public transport. Currently the quickest way is to catch a train to Waverley from Dunbar and then get a bus from North Bridge: catch LRT 8, 33, X48, 48 and 49 or Firstbus 86/86a.

You can also get Firstbus 44D/X45 or Perryman's 253 from Dunbar or East Linton to The Jewel Asda. From there catch LRT 49 to RIE (via Leith, takes 1hr); or get off at Duddingston Park South to catch LRT 21. Alternatively, Travel to Haddington to get Eve's 128 (via the coast).

Buses

txt2traveline
Bus times sent to your mobile e.g. text the bus stop reference code 58234625 to 0777 608 2 608 and receive a text of the next few buses going towards Edinburgh from Dunbar High Street.
To get a reference code for other bus stops visit www.travelinescotland.com

First: Dunbar & East Linton to Edinburgh
08708 727271 www.firstgroup.com/uk/buses/scotland_east/
Fare to Edinburgh: £5.50 single, £10.50 return (Exact fare only). £9.50 buys a 3 zone day-ticket for travel on any First bus in South East Scotland. Weekly/monthly/yearly tickets are also available.

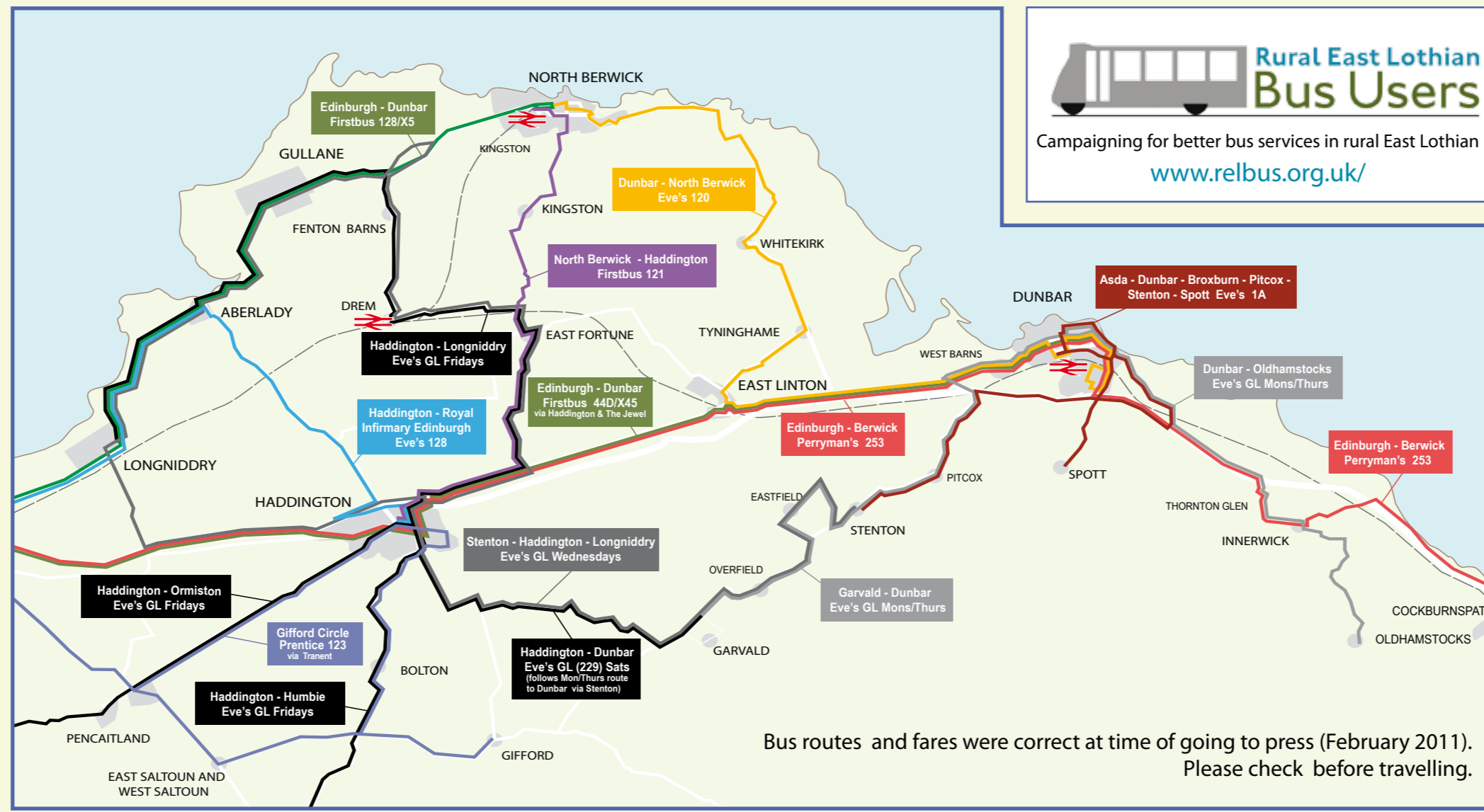
Service 44D (Journey time: 77 mins approx)
Dunbar (High St), East Linton, Haddington, Tranent, Musselburgh, Edinburgh. Early morning and late evenings only. All day Sunday.
Service X45 (Journey time: 64 mins approx)
Dunbar (High St), East Linton, Haddington, The Jewel, Edinburgh. Not Sundays.
Service 121 Haddington to North Berwick.
Service 124/X24 North Berwick to Edinburgh.

Trains

National Rail Enquiries
08457 48 49 50 www.nationalrail.co.uk
General train enquiries and timetable information. Calls cost 3p per min from a BT landline.

TrainTracker 0871 200 49 50
Phone for real-time, up-to-date information from the station departure boards. Or send a text message to 48 49 50 with your station (e.g. "DUNBAR" or "WAVERLEY TO DUNBAR"). Sent messages are charged at your usual network rate; the reply costs 25p.

Rural East Lothian Bus Users
Campaigning for better bus services in rural East Lothian
www.relbus.org.uk/



Bus routes and fares were correct at time of going to press (February 2011). Please check before travelling.

Spare Wheels

Dunbar's transport club

Want the convenience of having access to a car without the expense of owning one?
Travel less than 6000 miles per year?
Most drivers with this mileage or less will save money by joining a carshare club.

Dunbar's SpareWheels is a carsharing club that will make cars available to its members 24 hours a day, 7 days a week. Book a car online weeks ahead or with just a few minutes' notice, for anything from an hour to few days. Drive the car for as long as you've booked it and then return the car to the same location ready for the next person. Pay your itemised bill at the end of the month.

How it works

SpareWheels will launch in April 2011 with two cars, one parked near Dunbar town centre and one in the Hall Hill area. Each member will have their own smart card to unlock the car they have booked and usage will be recorded by a GPS computer so that an itemised bill can be sent to each member at the end of the month.

How much does it cost?

- £30 annual membership fee
 - £150 returnable deposit to cover insurance excess charges
 - £2.75 per hour (up to a maximum of £20 per day) for a small car e.g. Ford Focus, plus 22p per mile (including fuel)
 - £3.75 per hour (up to a maximum of £30 per day) for a 7-seater e.g. Vauxhall Zafira, plus 24p per mile (including fuel)
- Cars will be provided with a fuel card which can be used at any garage so drivers won't need to pay for fuel directly.

Sign up now

SpareWheels carshare club will start small and will accommodate a maximum of only 20 members in the first year. To make sure that you've got the chance to be one of them, register your interest now. We will run a first come, first served waiting list for members in the first year. As the club will be staffed by volunteers, any help you can offer will move you further up the list! We will need volunteers to check tyres and oil once a week, and help with admin, publicity, artwork, accounting, IT - anything you can do to help the club run as smoothly as possible.

The club will operate as a community interest company and profits will be re-invested into the club in order to keep car charges as low as possible.

contact www.sparewheels.org.uk or Sustaining Dunbar (www.sustainingdunbar.org) for more info

Having Difficulty Getting About?

That's where Dial-A-Ride and Dial-A-Bus can help. For 25 years, we have been providing an essential bus service to passengers with mobility problems throughout the entire Lothian region. Whether you want to get some shopping, attend a hospital appointment or simply visit a friend, Dial-A-Ride and Dial-A-Bus are able to provide you with a comfortable and friendly door-to-door service.

All our buses are converted to provide easy access for people with limited mobility and wheelchairs.

Phone 0131-447-9949 for more information
www.handicabs.org.uk

Taxis

Redline Cabs, Dunbar: 01368 864640
Torrance Taxis, Dunbar: 01368 862612
Lynton Private Hire, East Linton: www.lyntonprivatehire.com 01620 860849

Paths and quiet roads in Dunbar and district

Connecting Dunbar



Enjoy Scotland's outdoors responsibly

Everyone has the right to be on most land and inland water for recreation, education and for going from place to place providing they act responsibly. These access rights and responsibilities are explained in the Scottish Outdoor Access Code. The key things are:

- When you're in the outdoors:
- take personal responsibility for your own actions and act safely
 - respect people's privacy and peace of mind
 - help land managers and others to work safely and effectively
 - care for your environment and take your litter home
 - keep your dog under proper control
 - take extra care if you're organising an event or running a business.

- If you're managing the outdoors:
- respect access rights
 - act reasonably when asking people to avoid landmanagement operations
 - work with your local authority and other bodies to help integrate access and land management
 - respect rights of way and customary access.

Visit outdooraccess-scotland.com or contact your local Scottish Natural Heritage office



Key

- Fast and busy roads
- Quiet road or road space shared by cars and other users (usually without pavements)
- Unmetalled road/farm track
- Paved/pedestrian path
- Narrow or uneven pavement
- Unsurfaced or narrow path
- Steps or stairs
- Caution needed when crossing or walking along road
- John Muir Way (Fisherow - Dungleigh)
- National Cycle Network route 78 (Round the coast route: Berwick upon Tweed - St Andrews)
- The Hering Road right of way (Dunbar - Lauder)
- Other East Lothian Core Paths (Core Paths are recommended access routes to the countryside)
- Car park
- Cycle parking
- Camping and caravan park
- Post Box
- Public phone box
- Shop or shopping street
- Cafe/pub/refreshments
- Golf course
- Selected play parks
- Selected picnic benches
- Toilet facilities (including disabled and baby changing facilities unless otherwise indicated)



Dunbar Community Bakery
Opening 2011

BeGreen
Dunbar & District

Energy Efficiency Advice project providing

- Free Home energy efficiency advice
- If you live in the Dunbar & East Linton ward
- Free home energy audits
- Energy efficiency grants
- Energy efficiency grants
- Thermal imaging of your home
- Loan of home energy monitors

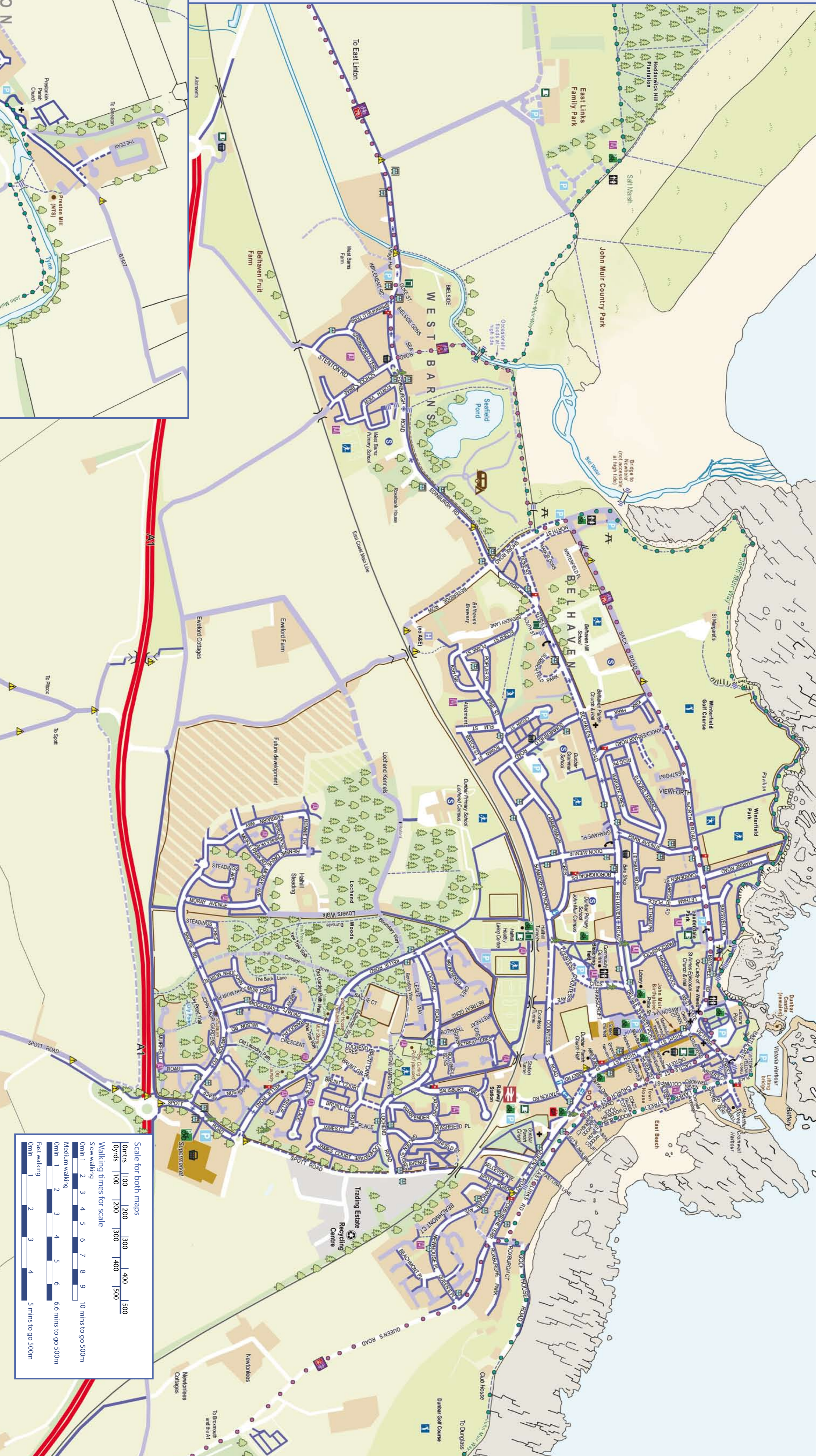
16 West Port, Dunbar EH42 1BU
01380 863720 begreendunbar@btconnect.com
www.beegreen.sustainingdunbar.org

DUNBAR
SUSTAINING
SCOTLAND

If you want to publish, stay connected or network easily in a friendly supportive environment, then a site in the OurLocality community might be for you. You can publish as much as you want and it's Free! Your website or blog can be public to the world or private for just your friends, and our premium features (Plus!) are completely optional.

ourlocality.org

OurLocality
The Community Network



Key to maps

	A199	Fast and busy roads		John Muir Way (Fishermew - Dungeess)		Post office		Picnic benches
	Road space shared by cars and other users (usually without pavements)		National Cycle Network, route 76 (Round the coast Berwick upon Tweed - St Andrews route)		Post Box		cafe/pub/restaurants	
	Unmetalled road/tram track		Bus stop without shelter		Public phone box		Tennis courts	
	Pavement/pedestrian path		Car park		Shop or shopping street		Skate park	
	Narrow or uneven pavement		Cycle parking		Hospital		Playing fields	
	Unsurfaced or narrow path		Toilet facilities (inc disabled and baby changing facilities unless otherwise indicated)		Doctor's surgery		Golf course	
	Dropped kerb/dropped kerb and traffic island		Camping and caravan park		Place of worship		Play park/children's play area	
	Steps or stairs		Pedestrian crossing		Walls and fences			
	Caution needed when crossing or walking along road							

Scale for both maps

100m 100 200 300 400 500
00m 100 200 300 400 500

Walking times for scale

Slow walking
1 2 3 4 5 6 7 8 9 10 mins to go 500m

Medium walking
1 2 3 4 5 6 6.6 mins to go 500m

Fast walking
1 2 3 4 5 mins to go 500m