

Code of Conduct for cycling on shared-use paths

Keep to the left. The shared paths round Hallhill are narrow and the tunnels may be very busy. Try to keep to the left so that there is room for people going in both directions.

Overtake on the right, and call out 'passing on your right!' as you approach.

Slow down at corners – especially if you can't see who might be coming the other way.

Take extra care if you're on your bike. Use your bell as bikes can be very quiet; make sure people know that you are coming up behind them.

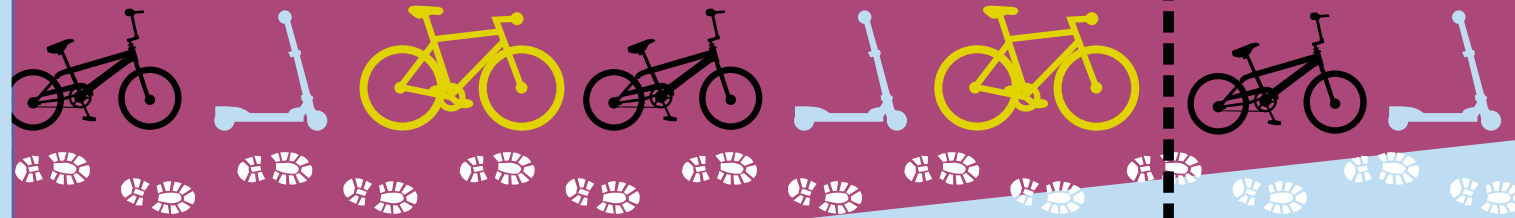
Use your lights. It is illegal to cycle on the road at night without lights, and dangerous to cycle on the paths.

...and - wherever you are...

Protect your head – wear a helmet!

New school - new routes!

However you travel to school, things will be different after the summer holidays of 2011. Once the new Lochend campus opens, there will be families walking and cycling in all directions. There will be no parking spaces beside the Lochend Campus. This map has some recommendations that may make your journey to and from school just a bit easier...



Cycling on the Road

All Primary 6 pupils have the opportunity to take part in the Scottish Cycle Training Scheme. If you passed this, and feel safe cycling on the road, please do so and try to keep the paths free for younger cyclists and pedestrians.

When cycling on the road, you are in charge of a vehicle and must obey the Highway Code. Wear bright colours and be sure that drivers can see you.

Thanks to the Junior Road Safety Officers; Jenny, Robbie, Samantha and Courtney.

20's Plenty



Where People Live

paths
for all

Connecting Dunbar



Safe routes around Dunbar Primary School

John Muir Campus

Lochend Campus

Take care when crossing the road - we're here to help!



Keep left

Where will you go?

Use this map to help you work out the best way to get to your new campus.

The Trees and Belhaven

Winterfield

Harbour and High Street

John Muir Campus

East Beach

Lochend Campus

Hallhill

Tunnelling into school

How do we avoid 'people jams' as parents, children, buggies, bikes and scooters all try to get to school on time? We have suggested a one-way system here, using the Hallhill Tunnel to go towards the Lochend Campus and the Countess and Station Tunnels to get to the John Muir Campus.

Allow ten minutes to walk between the two campuses. If you are cycling or scooting, you may be faster, but add time for parking.

